



FACE NEWSLETTER

Welcome to the very first edition of

Faversham Assistance Centre - FACE Newsletter

There will be 2 more before the end of the year.

We hope you like it and it helps you find out more about FACE.

OUR WORK

Before and after we completed in 2022
in Faversham and Sittingbourne.

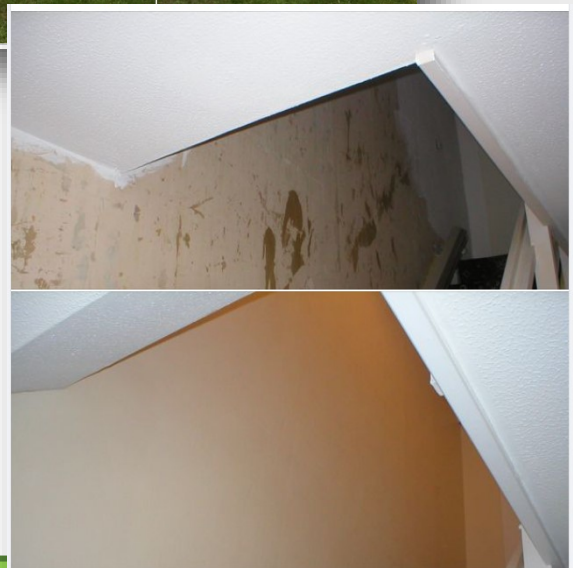


www.facefaversham.co.uk

We need your help!

We are now collecting plants for our Market Stall in Faversham on Saturday the 13th of May. This is our biggest fundraiser for the year and we need plants to sell! Can you grow plants to help FACE?

Thank you!



We complete our work on a donation only basis
please show your support by donating generously.

FACE does not get any government funding

We are now in our gardening season after completing a successful decorating season (which started in mid November 2022). We expect to continue with the gardening services until the end of November (unless too wet).

Our waiting list is now at 25 between Faversham and Sittingbourne, so please let us know if your circumstances have changed or if you know of someone who needs FACE. The sooner they get on the list, the sooner we can start helping them! Please get in touch 07483 150330

Please use your phone to donate to FACE using this QR





Faversham Assistance Centre (FACE) is looking to broaden the experience of its Trustees.

Would you like to join the team as a Trustee?

Earn the satisfaction of helping the most vulnerable in our community through supporting our small team of workers and volunteers who deliver help to those most in need, with gardening and decorating

FACE covers Faversham and Sittingbourne

FACE trustees work closely with our Project Manager to bring in new ideas, and to source new funding

Trustees meet monthly and host an AGM (Annual General Meeting)

Please make enquiries to:

Miranda Ford - Chair of Trustees

trigpointx@gmail.com



FAVERSHAM & DISTRICT
COMMUNITY
LOTTERY

Play the local lottery and help
FACE raise funds.

Please go to

favershamdistrictlottery.co.uk

and find out how to support us!

Don't forget!

New opening
times

Tues. to Thursday

9.30-2.30

Please get
in touch

07483

150330

Thank you for reading, our next Newsletter will be in the summer.

Please don't forget to get in touch if you think you can donate plants for our Market Stall. Please let Billy, Matt or Mark know if you can grow some plants for us, we would be grateful for any plants, flowers and veggies.

We appreciate any donation.

All the best, Federica Holland (Project Manager)

